

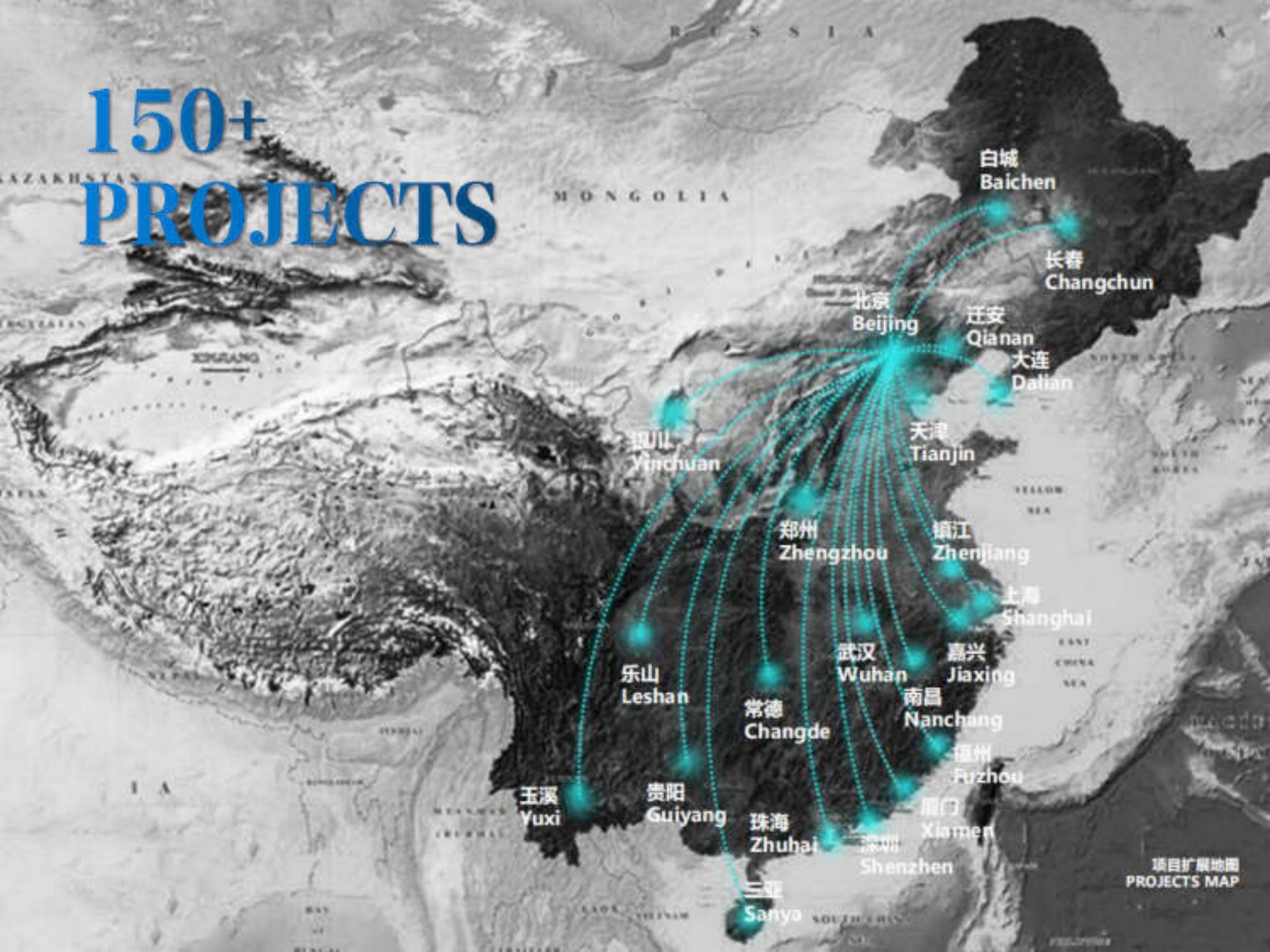


**ECOLOGY+IMAGINATION**  
**瓦地设计**

WADI group is based in Beijing, specializing on urban landscape and water environment design. Our clients include governmental organizations and private developers who start to possess environmental awareness and see ecology as valuable assets in their daily life. Our services right now include sponge city/water management, landscape/urban planning and green architecture design, from concept through to construction supervision service.

We are landscape architects, water engineers and environment researchers. The core of our work is Nature-based Approach for quality of life. City and nature form one community, we and all we create belong to this complex metabolism and process.

# 150+ PROJECTS



项目扩展地图  
PROJECTS MAP

# WADI

Landscape + Environment + Eco-Aesthetics  
景观设计 + 环境技术 + 生态美学

## WHO WE ARE



### Founder: WU HAO

Registered Landscape architect in the Netherlands  
China CLA member  
China Eco-water Society Member

Founder/ CEO, WADI Design & Engineering Group  
Bachelor Tsinghua University, Beijing  
Master Wageningen University, the Netherlands

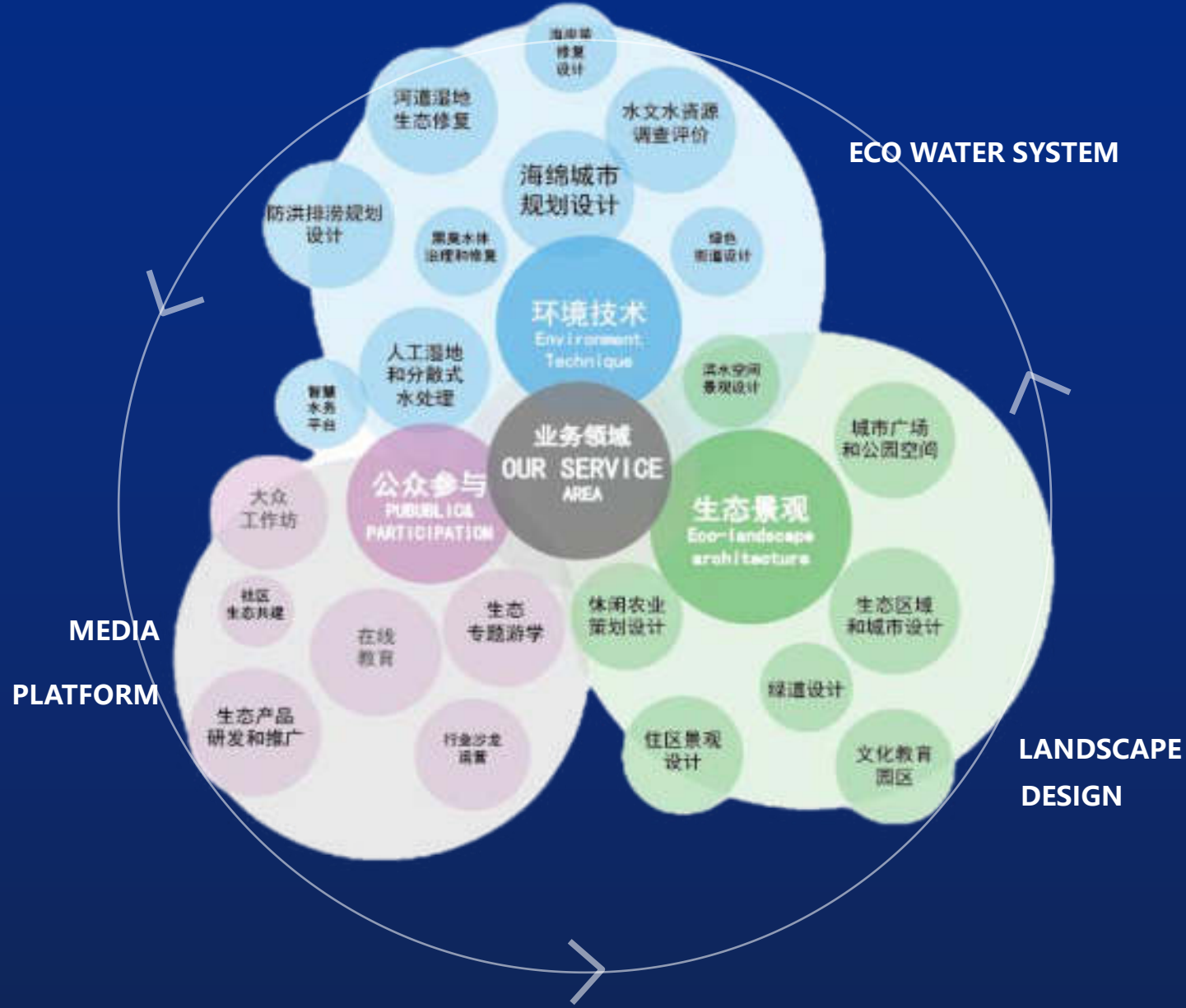
# WADI

Landscape + Environment + Eco-Aesthetics  
景观设计 + 环境技术 + 生态美学

## WHO WE ARE

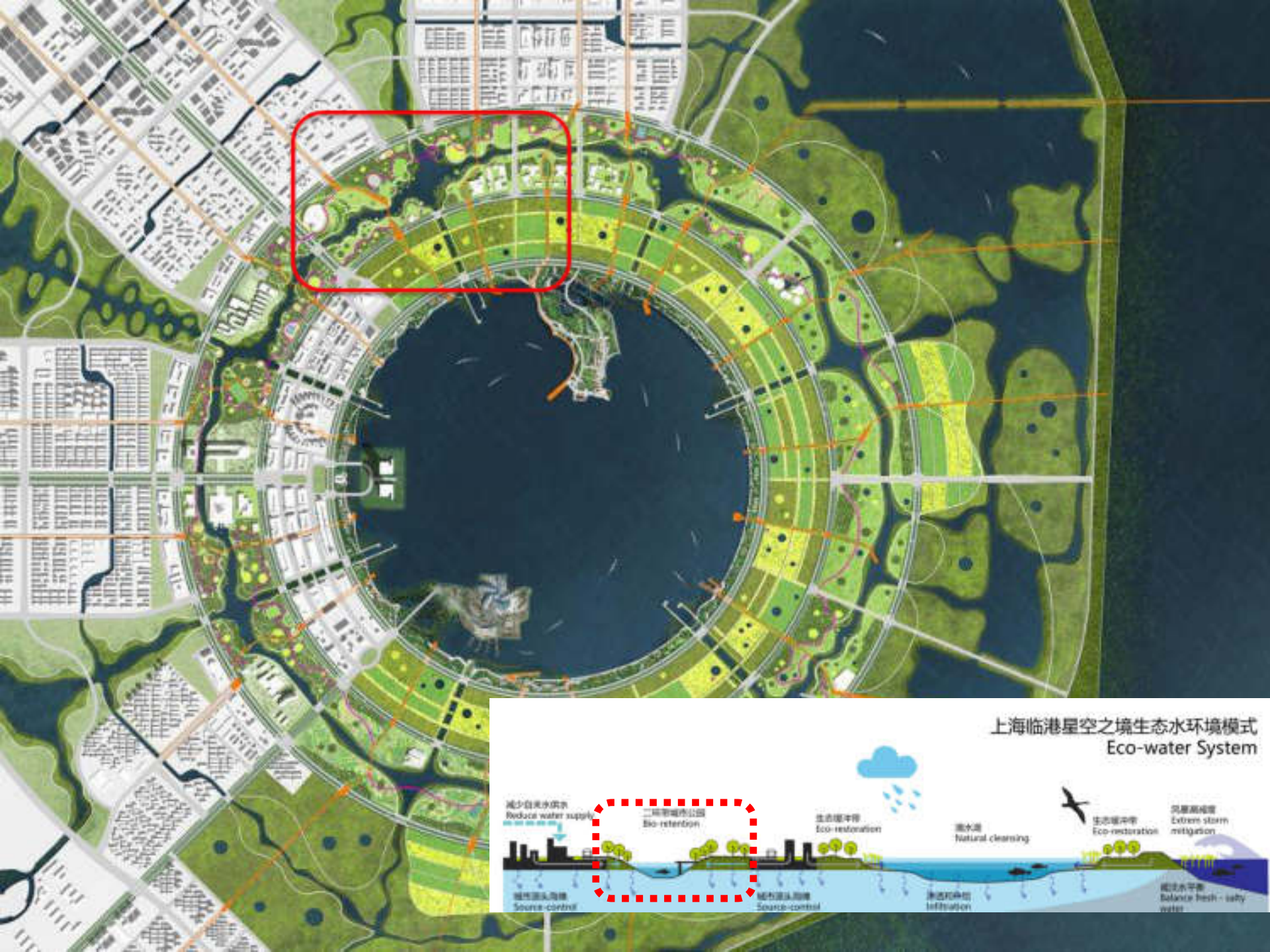


# WHAT WE DO

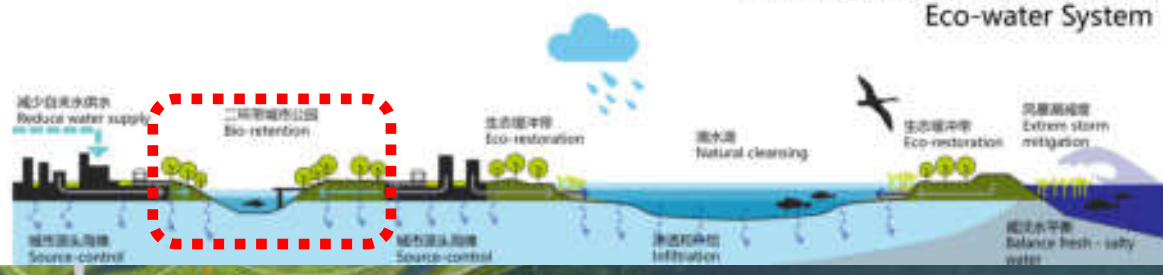


**上海星空之境海绵公园水系统**  
**SHANGHAI LINGANG SPONGE PARK**  
**WADI with Polyplan**



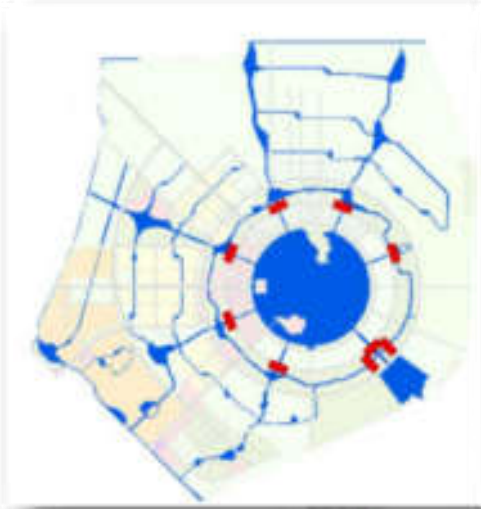


### 上海临港星空之境生态水环境模式 Eco-water System

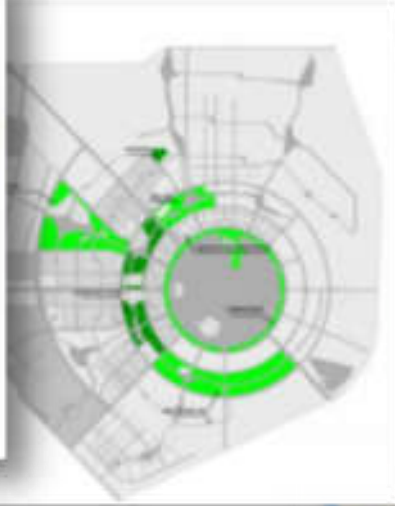




sponge city masterplan from SMEDI:



**WATER NETWORK**



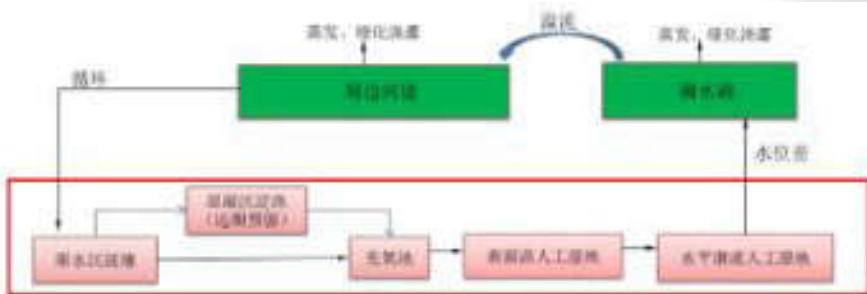
**LID ON SOURCE**



**CIRCULATION**



**ECO-RESTORATION**







WADI



**WADI**

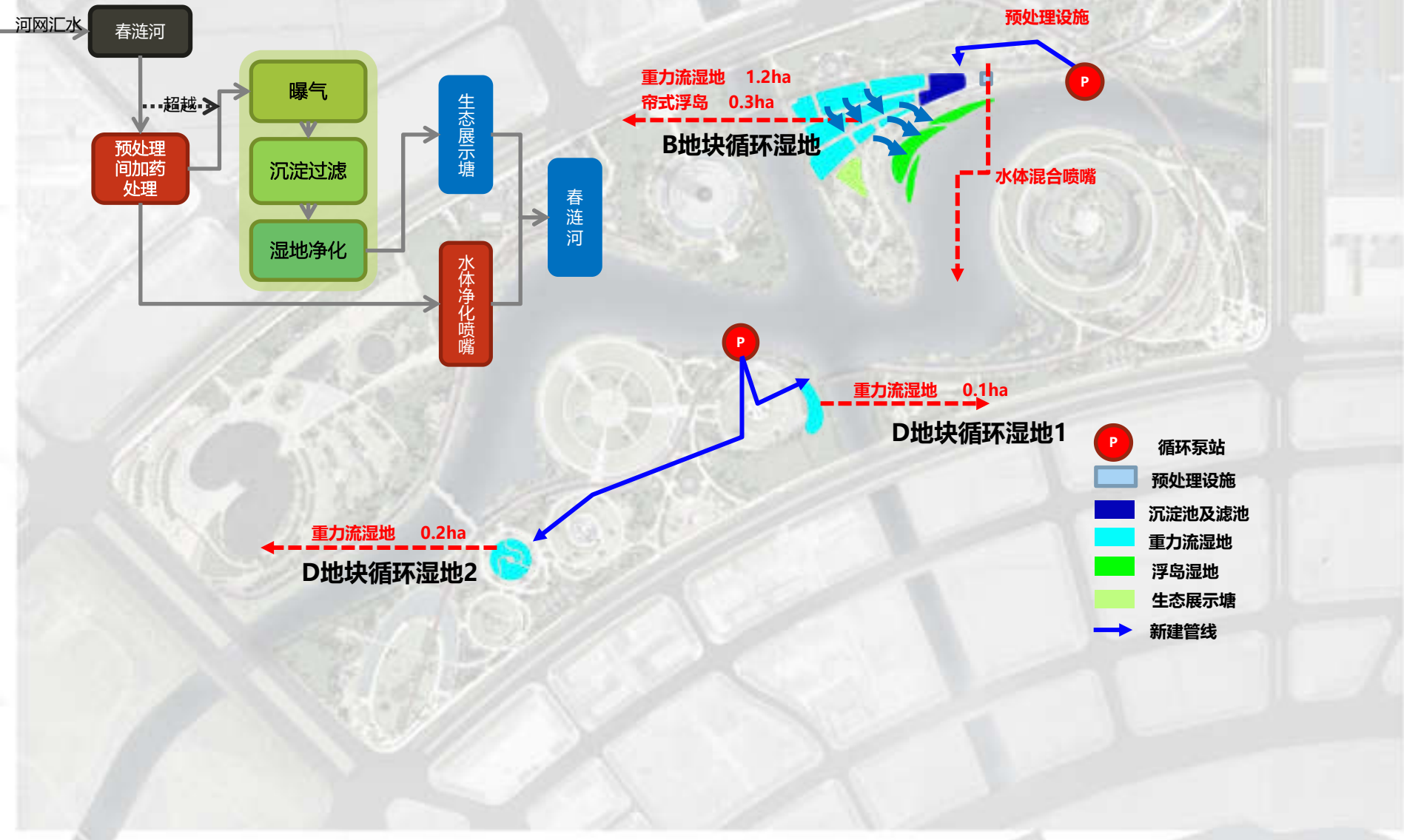






# 水环境工程

## 湿地循环净化平面

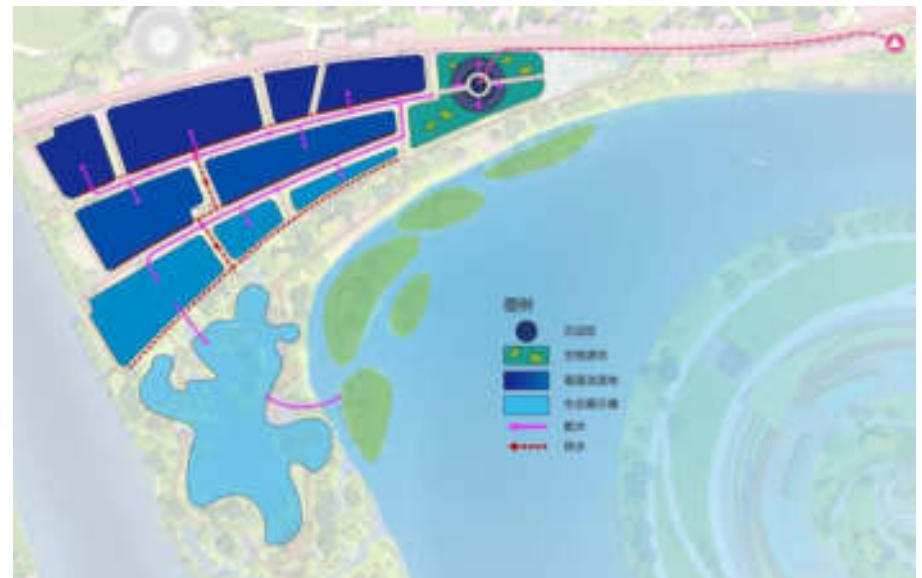
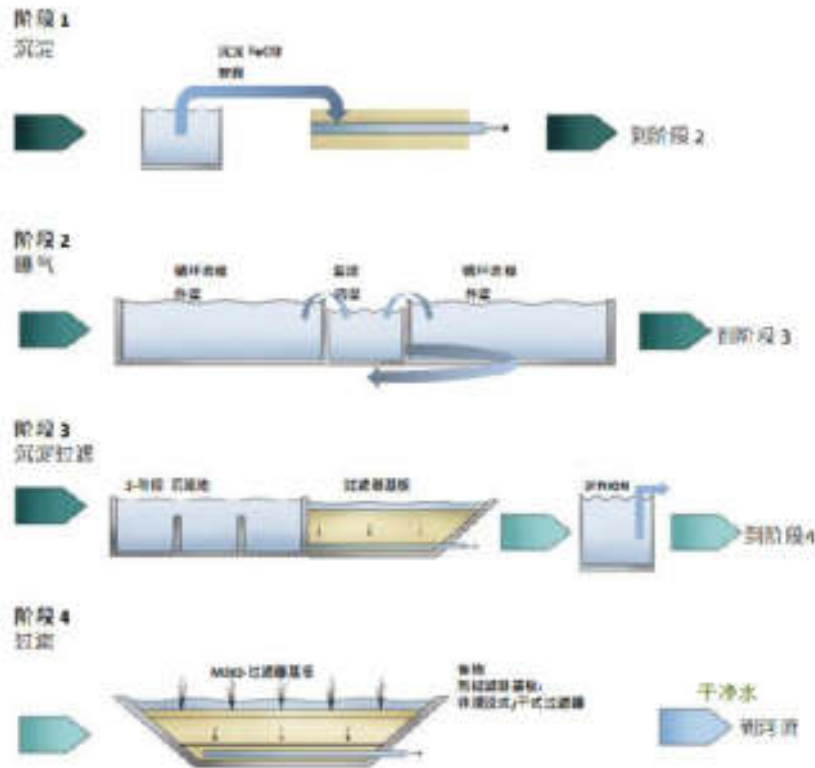




# 海绵方案设计-水环境工程

## -湿地工艺设计

提升泵站----预处理机房 ----沉淀池（沉淀絮凝） ----生物滤池（过滤） ----垂直流人工湿地----展示塘----漂浮湿地----河道





河道改道区

浅水生境区

表流生境区

预处理区

生态滤池区

重力流多级加强区

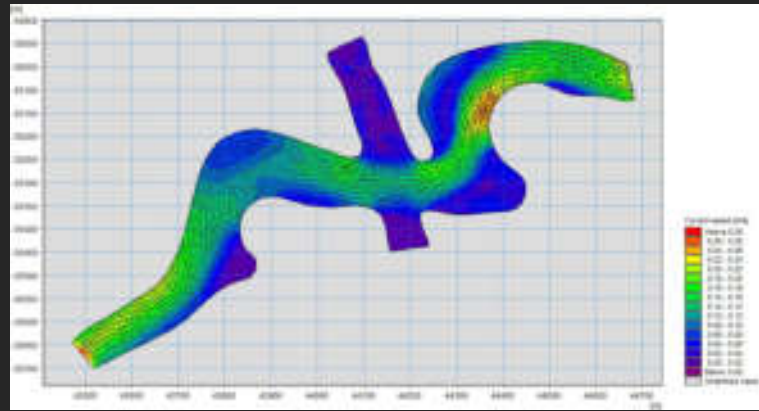






# 潜流塘建设后初期









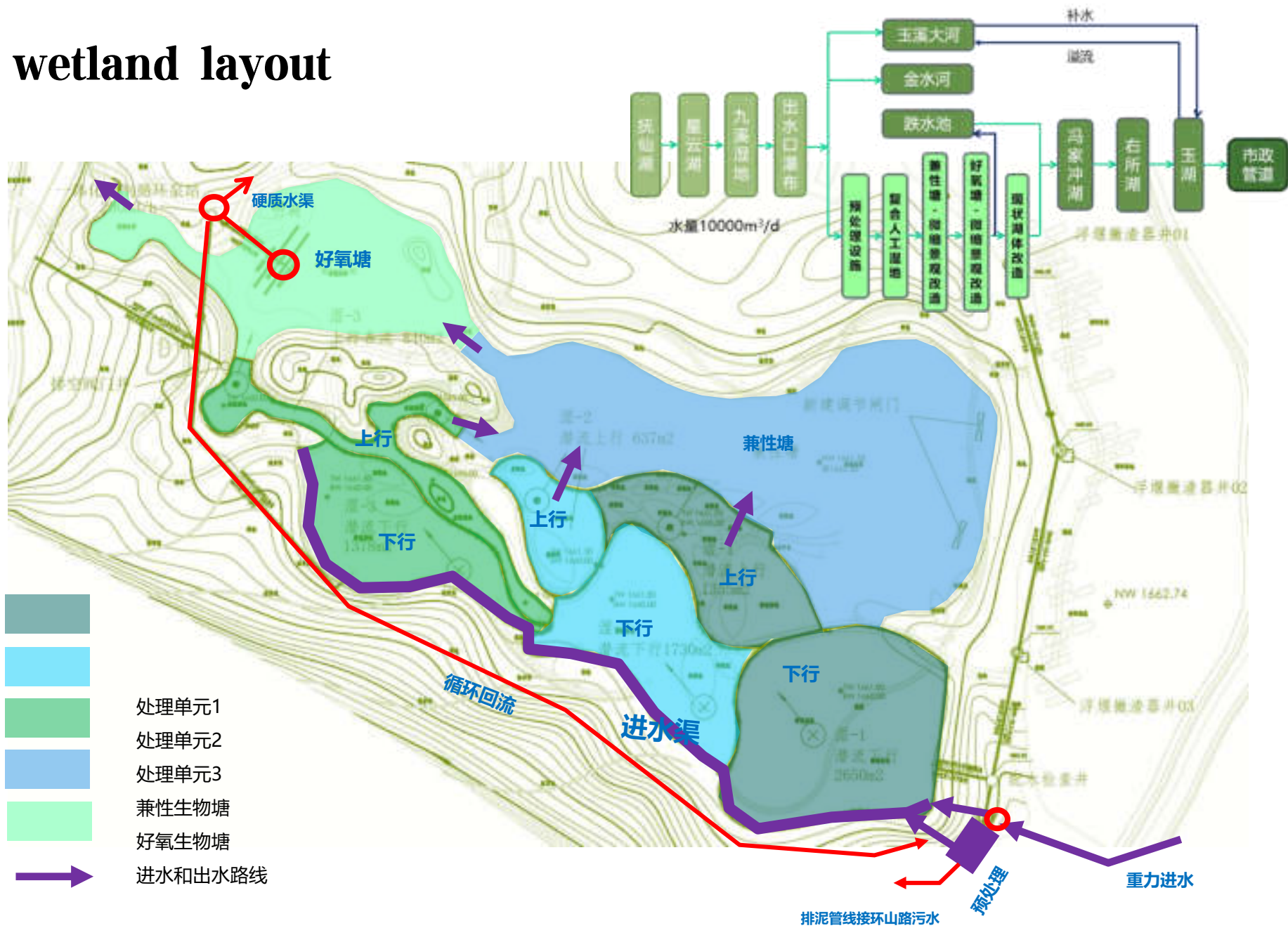
**玉溪出水口湿地公园 云南**

**Yuxi Yulake Wetland PARK Yunnan Province**

# overview on water layout



# wetland layout



- 处理单元1
- 处理单元2
- 处理单元3
- 兼性生物塘
- 好氧生物塘
- 进水和出水路线





**WADI**



II-III类水质



劣V类水质





WADI

**WADI**









WADI

SHOT ON MI MIX 3  
AI DUAL CAMERA



**WADI**

**玉溪东风广场海绵改造**  
**Yuxi Dongfeng Plaza Sponge City**



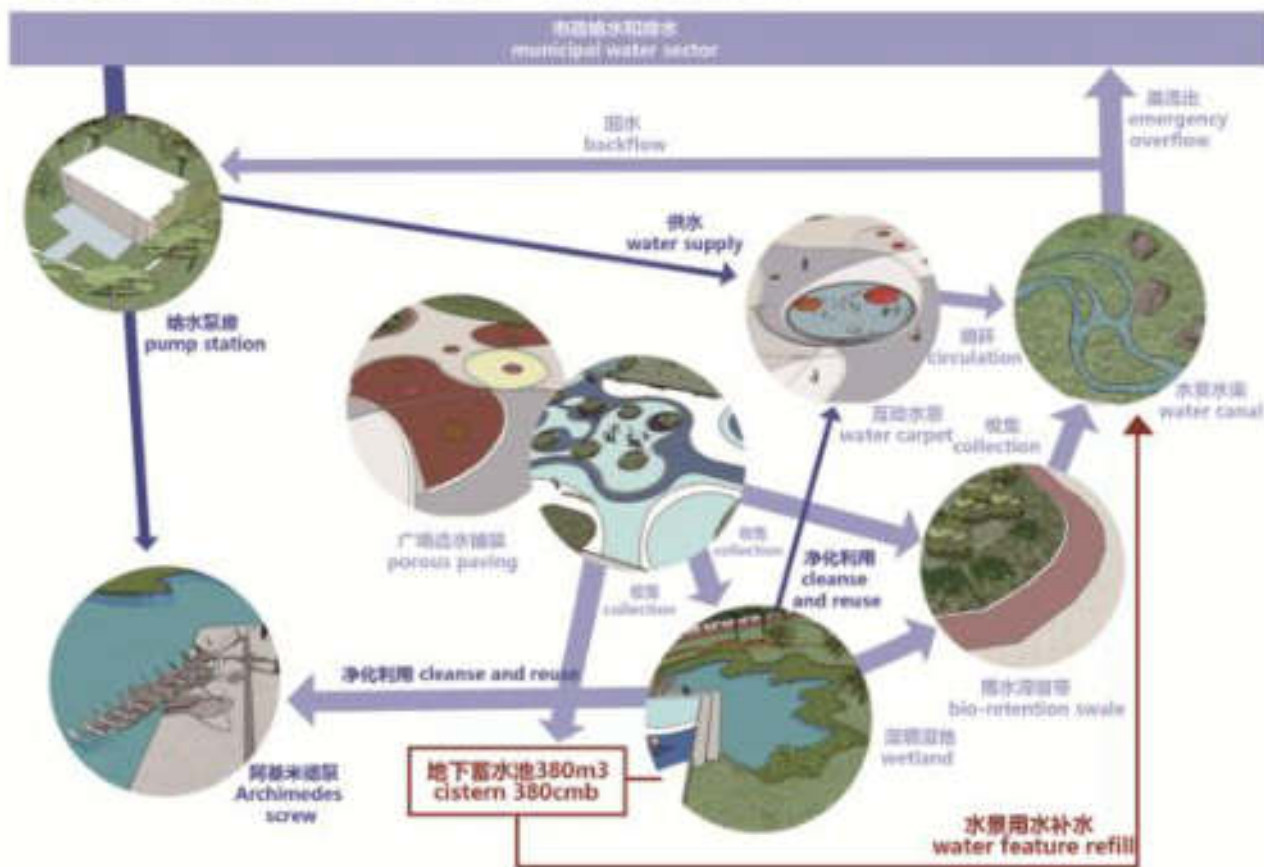
# ... .. A MULTI-FUNCTIONAL GREEN SPACE AND AN URBAN HABITAT INVITING PEOPLE TO EXPERIENCE NATURE DYNAMICS



- 1 entry water plaza
- 2 terraced lawn
- 3 vegetated swales
- 4 rain gardens
- 5 canopy plaza with underground tank
- 6 seating waterfront and pond-wetland system
- 7 ginkgo promenade
- 8 garden for birds



# WATER IS MANAGED IN A NATURAL CYCLE FOR QUALITY OF LIFE ... ..



rain garden



harvested rainfall in pond



wetland circulating for wet pond



reuse for water playing

Most hard surface in the park before was impervious, resulting in a large amount of runoff discharge in storm event. Bio-retention swales of 791 sqm., vegetated swales of 165 sqm., rain gardens of 462 sqm., a wet pond of 180 sqm., and an underground cistern of 300 cbm have been proposed. Resulting:

- More than 90% of runoff is infiltrated or harvested on site.
- TSS concentration has been reduced by 45%.
- 12% of rainfall precipitation is being reused for irrigation and water features.





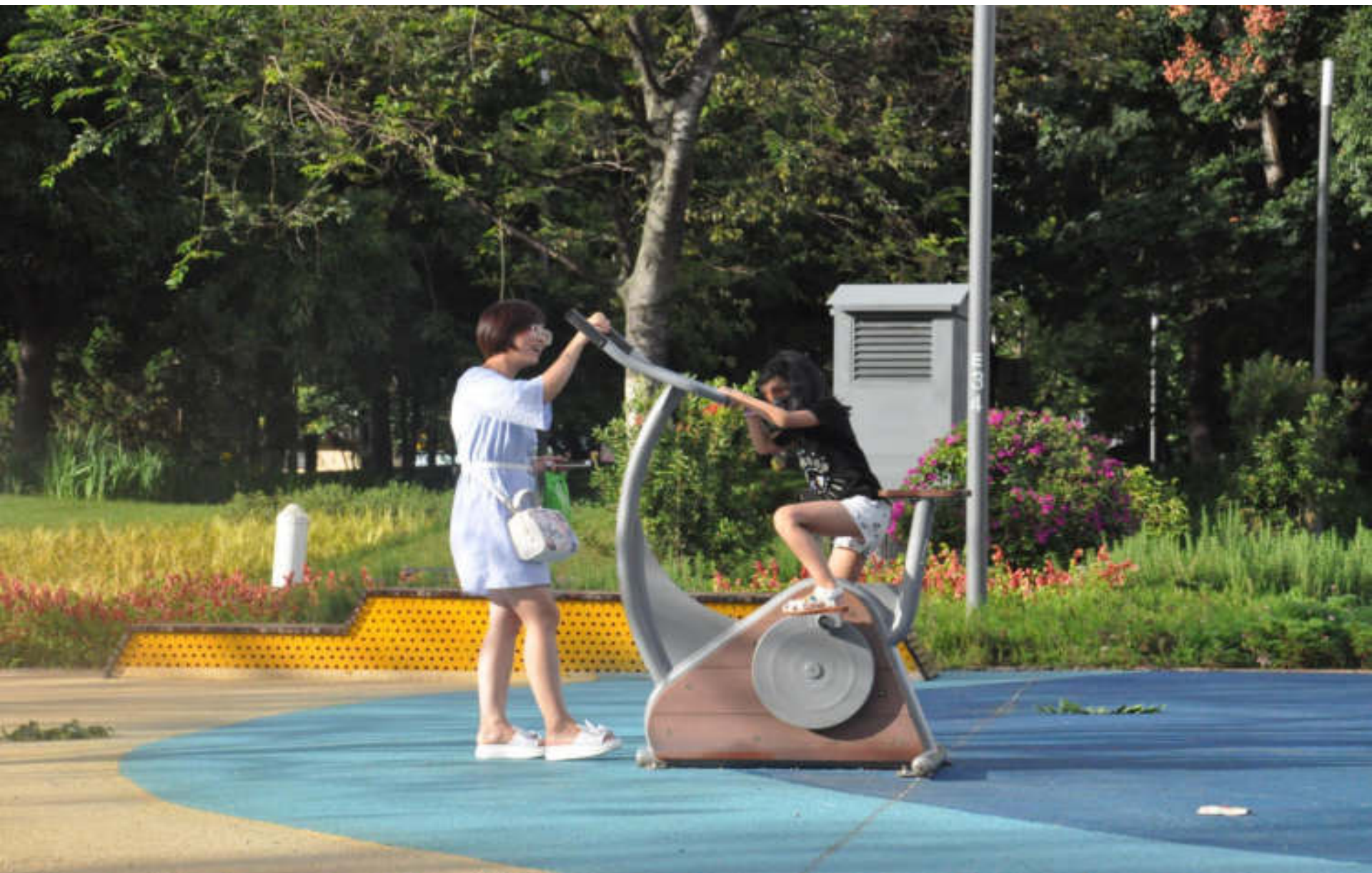














GERMAN  
DESIGN  
AWARD  
WINNER  
2020

## Dongfeng Park

— EXHIBITION ARCHITECTURE —

Project:

Year:

Architect:

School Space and Administration  
China State Administration Engineering Corporation  
10220 Teacher Sun Wu, Dong Lu, Dong Lu  
North China University of Engineering and Technology  
Beijing Institute of Technology, Beijing, China

Exhibition, 20 September 2020

*Prof. Christoph*

Head of Award 2020  
German Design Council

*[Signature]*

Chairman of Jury  
German Design Council



German Design Council  
www.gdcouncil.com

**中科院深圳理工大学景观和水系统**  
**SIAT Campus Landscape and Water System**







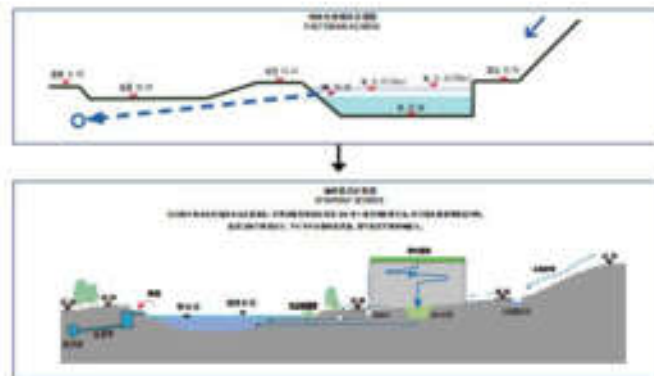


## 01 利用现状水库改造的多功能水空间

### TRANSFORMATION OF EXISTING RESERVOIR



内环线外环线  
Catchment Limiting Map





03 生态自净为主的水环境  
NATURALLY CLEANSING BIOTOPE



## 04 综合水资源利用探索的水敏组团 WATER SENSITIVE CLUSTER



### 生态旱溪

旱溪能很好地渗透、滞留雨水，具有较强的地下水涵养功能，对传输净化中水也有一定促进作用。在枯水期，居民可以将旱溪作为一种休闲运动场所；在汛期，居民则可以借助旱溪的蓄水能力来抵御洪涝灾害。



## 05 亲自然的绿色共享空间 BIOPHILIC CLUSTER



生态廊道类型  
Habitat-type Type





A photograph of two men standing on a paved walkway next to a body of water. The man on the left is older, with white hair and glasses, wearing a dark blue button-down shirt and black pants. The man on the right is younger, with black hair and glasses, wearing a black t-shirt and blue jeans, and carrying a brown messenger bag. In the background, there is a large, modern building with a curved facade and a glass facade, situated on a waterfront. The sky is clear and blue. The text 'Dear friends' and 'Willkommen' is overlaid in yellow, and 'in China' is overlaid in red.

**Dear friends**  
**Willkommen**  
**in China**